

EMF Survey Report

Radio Frequency Fields (Antenna Emissions)

Prepared for

[Client Name]

Site Locations

[Location 1]

[Location 2]

1st Survey Date: [1st Date]

2nd Survey Date: [2nd Date]

Report Date: [Report Date]

EMF SERVICES

15681 Sonoma Drive #201
Fort Myers, FL 33908
Phone (239) 209-1418
Fax (866) 321-2082
www.emfservices.com

RF Report Sample

Excerpts Only

TABLE OF CONTENTS

1.0 SUMMARY AND CONCLUSIONS

1.01	Measurement Results	1
1.02	Exposure Significance	3
1.03	Recommended Corrective Measures	3

2.0 BACKGROUND INFORMATION

2.01	Referenced Exposure Guidelines (FCC)	4
2.02	Informal Precautionary Guidelines	7
2.03	International RF Protection Guidelines	9
2.04	Radio Frequency Measurement Units	11

3.0 SURVEY METHODOLOGY

3.01	Instrumentation	12
3.02	Procedures	12

APPENDIX MEASUREMENT DATA

Detailed Measurement Results
Test Locations
Spectrum Analyzer Plots
Site Photos
Equipment Calibration Certificates

Appendix

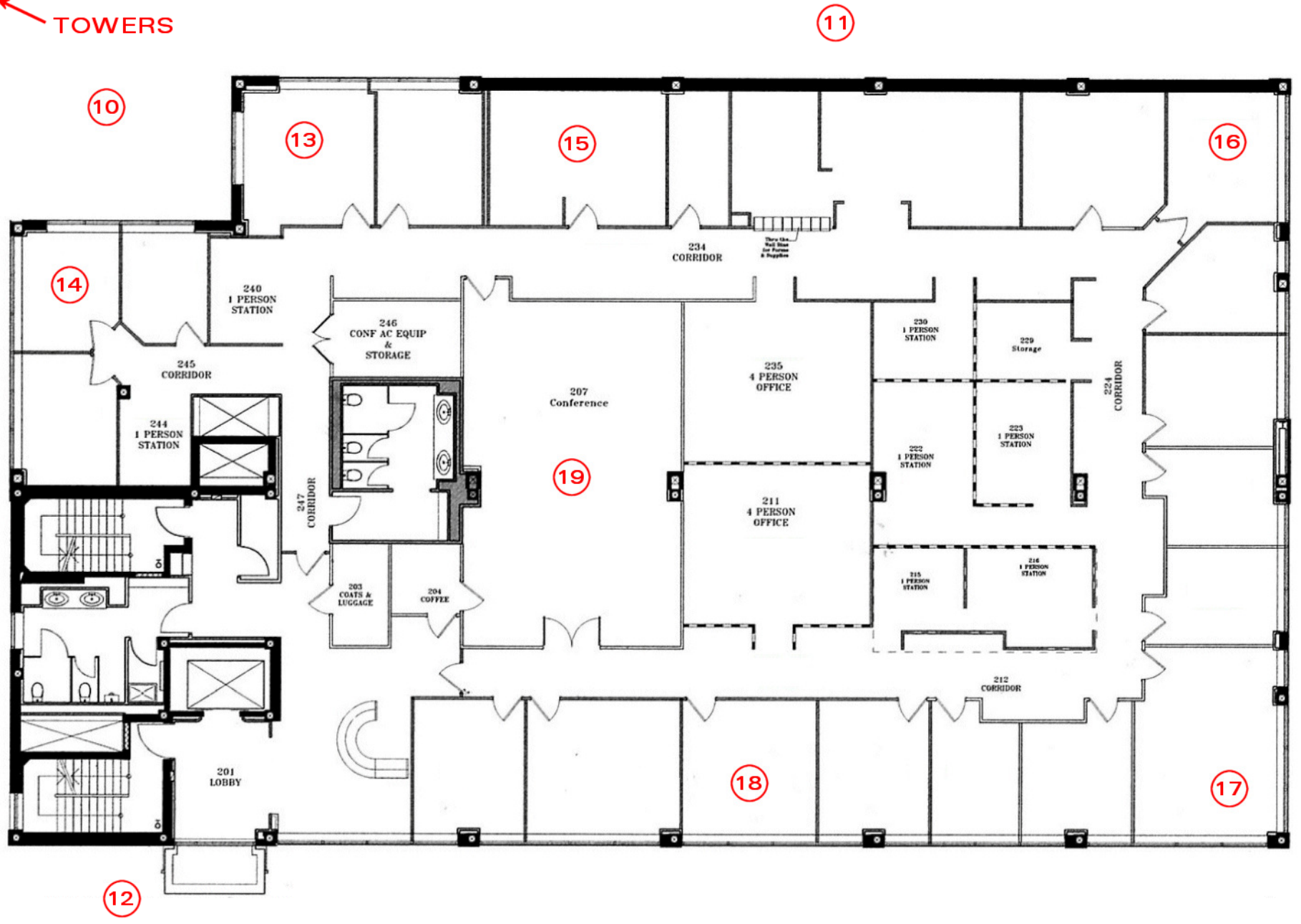
DETAILED MEASUREMENT RESULTS

PT #	Survey	Location	Total RF Power nW/cm ²	% MPE	% Total Power from FM	% Total Power from TV	% Total Power from Cell	Total Cell RF Power nW/cm ²	Notes
1	1 st	Sample Location 1 Outside	8.2	0.00%	22%	5%	73%	6.0	<p>% MPE = % FCC Maximum Permissible Exposure. Calculation is based on cumulative MPEs for multiple frequency ranges.</p> <p>Total Cell levels exceeding 100 nW/cm² are highlighted in red (represents informal precautionary exposure guideline for pulsed signals).</p> <p>1000 nanoWatts (nW/cm²) equals 1 microWatt (uW/cm²)</p> <p>100 nanoWatts (nW/cm²) equals 0.1 microWatt (uW/cm²)</p> <p>1 nanoWatts (nW/cm²) equals 0.001 microWatt (uW/cm²)</p>
	2 nd								
2	1 st	Sample Location 2	1.1	0.00%	51%	14%	35%	0.4	
	2 nd								
3	1 st	Sample Location 3	1.5	0.00%	49%	19%	31%	0.5	
	2 nd								
4	1 st	Sample Location 4	0.5	0.00%	50%	20%	30%	0.2	
	2 nd								
5	1 st	Sample Location 5	0.4	0.00%	38%	37%	26%	0.1	
	2 nd								
6	1 st	Sample Location 6	0.2	0.00%	50%	12%	38%	0.1	
	2 nd								
7	1 st	Sample Location 7	0.7	0.00%	47%	35%	18%	0.1	
	2 nd								
8	1 st	Sample Location 8	1.0	0.00%	71%	9%	20%	0.2	
	2 nd								
9	1 st								
	2 nd								
10	1 st	Sample Location 10 Outside	28.7	0.01%	11%	14%	75%	21.5	
	2 nd								
11	1 st	Sample Location 11 Outside	62.7	0.01%	8%	38%	53%	33.5	
	2 nd								
12	1 st	Sample Location 12 Outside	202.4	0.04%	1%	19%	80%	162.6	
	2 nd								
13	1 st	Sample Location 13	2.2	0.00%	3%	50%	47%	1.0	
	2 nd								
14	1 st	Sample Location 14	6.1	0.00%	3%	46%	51%	3.1	
	2 nd								
15	1 st	Sample Location 15	0.9	0.00%	9%	25%	66%	0.6	
	2 nd								

DETAILED MEASUREMENT RESULTS

PT #	Survey	Location	Total RF Power nW/cm ²	% MPE	% Total Power from FM	% Total Power from TV	% Total Power from Cell	Total Cell RF Power nW/cm ²	Notes
16	1 st	Sample Location 15	0.4	0.00%	34%	63%	4%	0.0	<p>% MPE = % FCC Maximum Permissible Exposure. Calculation is based on cumulative MPEs for multiple frequency ranges.</p> <p>Total Cell levels exceeding 100 nW/cm² are highlighted in red (represents informal precautionary exposure guideline for pulsed signals).</p> <p>1000 nanoWatts (nW/cm²) equals 1 microWatt (uW/cm²)</p> <p>100 nanoWatts (nW/cm²) equals 0.1 microWatt (uW/cm²)</p> <p>1 nanoWatts (nW/cm²) equals 0.001 microWatt (uW/cm²)</p>
	2 nd								
17	1 st	Sample Location 15	5.6	0.00%	1%	97%	1%	0.1	
	2 nd								
18	1 st	Sample Location 15	0.2	0.00%	54%	12%	34%	0.1	
	2 nd								
19	1 st	Sample Location 15	0.2	0.00%	21%	63%	16%	0.0	
	2 nd								
20	1 st	Sample Location 20	6.3	0.00%	0%	99%	0%	0.0	
	2 nd								
21	1 st	Sample Location 21 Outside	15.5	0.00%	15%	79%	6%	0.9	
	2 nd								
22	1 st								
	2 nd								
23	1 st	Sample Location 23 Outside	6.3	0.00%	20%	52%	28%	1.8	
	2 nd								
24	1 st	Sample Location 24 Outside	35.9	0.01%	6%	51%	44%	15.7	
	2 nd								
25	1 st	Sample Location 25 Outside	5.9	0.00%	3%	10%	87%	5.1	
	2 nd								
26	1 st	Sample Location 26	9.3	0.00%	1%	98%	1%	0.1	
	2 nd								
27	1 st	Sample Location 27	0.9	0.00%	42%	51%	7%	0.1	
	2 nd								
28	1 st	Sample Location 28	1.1	0.00%	11%	86%	4%	0.0	
	2 nd								
29	1 st	Sample Location 29	2.5	0.00%	17%	81%	2%	0.1	
	2 nd								
30	1 st	Sample Location 30	0.4	0.00%	23%	53%	24%	0.1	
	2 nd								

TOWERS



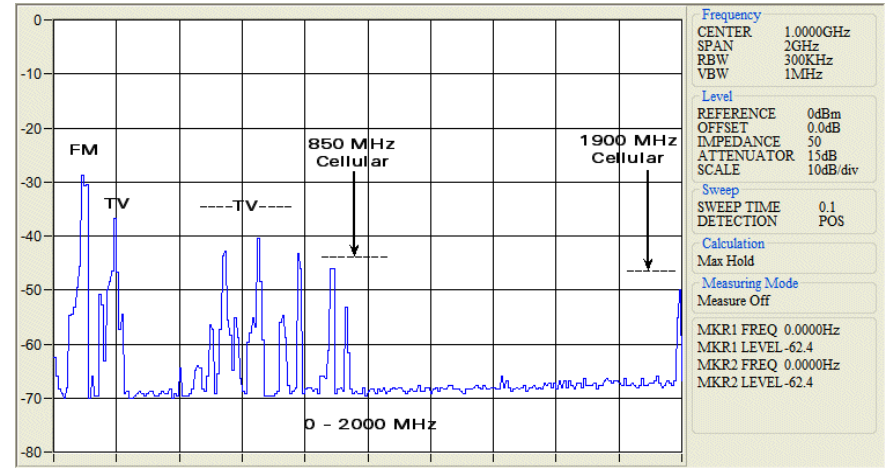
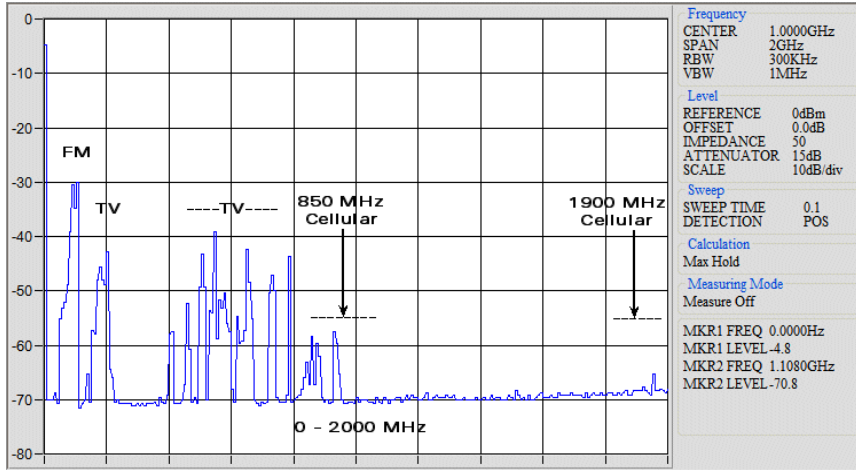
RF MEASUREMENT POINTS

RF Spectrum Analyzer Plots

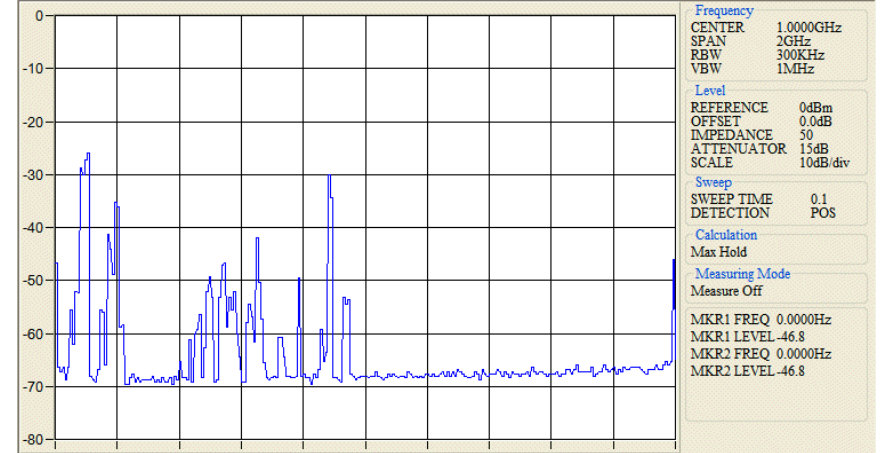
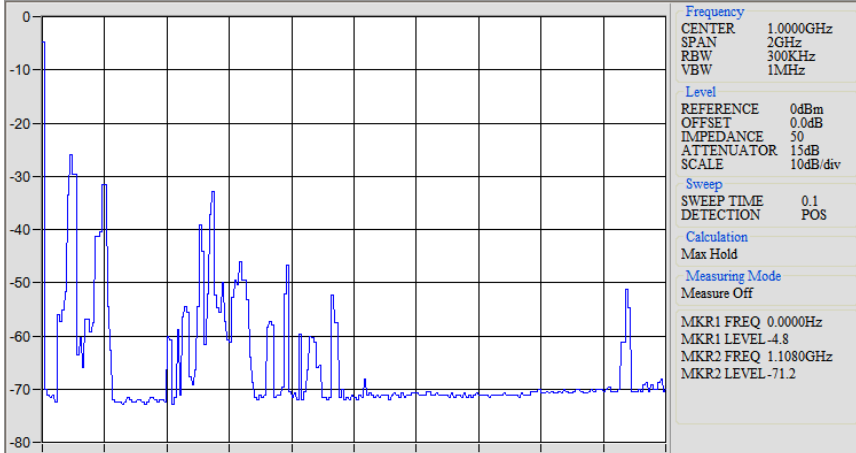
1st Survey

2nd Survey

01



02



03

